

# Choosing the Right Wig for You

Finding the right wig and style could leave you frustrated and confused. There is so much to consider. What color, length, or texture, do I want curly or straight hair? Should it be synthetic or human hair?

Buying a wig for medically induced hair loss is totally different than buying a wig for the adventure of changing your look.

In the 1970's, women often had to put up with itchy, heavy, obviously synthetic wigs if they hoped to cover up during chemotherapy treatments. But now the options are so lifelike and diverse that choosing a wig is exciting!

Let's keep it simple.

## Step 1. What is your head size?

Wigs come in several sizes, petite, average, and large. Average is about 22 inches in circumference. In general, if you have trouble finding hats big enough, you might need a large size wig. If hats are always too big, you might need a petite size wig.

## Step 2. What style best fits the shape of your face?

Most women who need a wig because of hair loss just want to look normal. Try on wigs that are a little longer than the length you are used to, so that your wig stylist can



*Sentoo Wig Suki*

design the wig to fit your face.

Don't worry when your wig looks much too thick for you. Wigs are made with 10% to 30% more hair than you need and must be aerated to make them look natural. This allows your stylist to thin and trim to get the right style.

## Step 3. What color is best for my skin tone?

You probably already know what colors you like in your hair. A wig with multiple shades will look more natural than a solid color. Again, your wig stylist will show you a variety of colors to choose from. A human hair wig can be tinted if you don't like the color, however, don't try to lighten it. You will cause hair loss and damage to the wig by using any bleaching product. The color of synthetic hair cannot be changed.

## Step 4. What kind of wig /cap do I need?

The next thing to consider is what type of wig suits you best. If you need full coverage due to hair loss or you want to try a different color or style altogether, then you want to choose a full wig. If you want a solution for thin hair, and want to add fullness or additional volume, length or curl, then try a top piece. The top piece blends into your own hair to look very natural.

## Step 5. What's best for me: synthetic or human hair?

If you intend to wear the wig daily, then you will want to choose a higher quality wig that is very comfortable and has a cap that allows for good air

circulation. A good wig will also have tape areas on the front, sides and nape where you can use toupee tape to secure it on.

The next thing to consider is how you plan to style the wig.

Human hair offers the ability to color, curl or perm the wig. It is soft and feels the most natural. A human hair wig needs more maintenance. Just like natural hair, it will react to humidity, rain, hot sun, etc, and need styling often. Human hair wigs are also more expensive than synthetic.

Synthetic wigs require little styling, although the style is set and not very easy to change. There is a new type of synthetic hair that has the best features of both human and synthetic hair. It mimics human hair and can be styled like human hair but retains its body and shape like synthetic hair.

We recommend that you take your wig to a professional wig stylist. While wearing your wig, the stylist can cut, trim and even thin your wig to make it look like your own.

But no matter where you purchase your wig, if you want to achieve the most natural look, it's good to be informed and really understand the look you're going for, and shop accordingly.



*Sentoo Wig Yama*

## The New European Wig

We proudly present our newest line of wigs from Europe, the Sentoo Collection! A collection of 5 unique styles specially designed for women with sensitive needs. The Sentoo Collection stands out by featuring these unique characteristics:

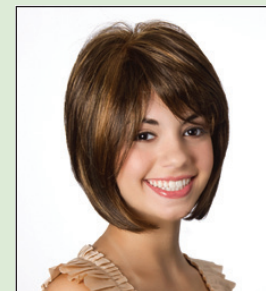
- LIGHT AS A FEATHER
- SOFT GENTLE FEEL
- NATURAL APPEARANCE
- INVISIBLE HAIR LINE
- NATURAL COLOR EFFECTS

The Hair Specialists offer professional wig design with the expertise and skill to design your wig to fit your features.

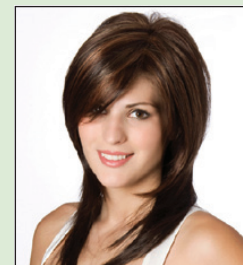
We will work with you every step of the way. From the initial wig fitting all the way through the growing back stages.



*Sentoo wig Sora*



*Sentoo wig Kasami*



*Sentoo wig Myu*



[www.thehairspecialist.net](http://www.thehairspecialist.net)  
 330.655.2222  
 180 West Streetsboro Street  
 Hudson Ohio 44236